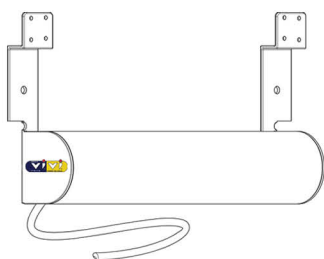
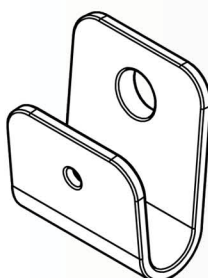


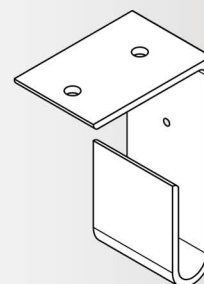
**Kit motore:**



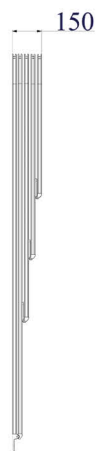
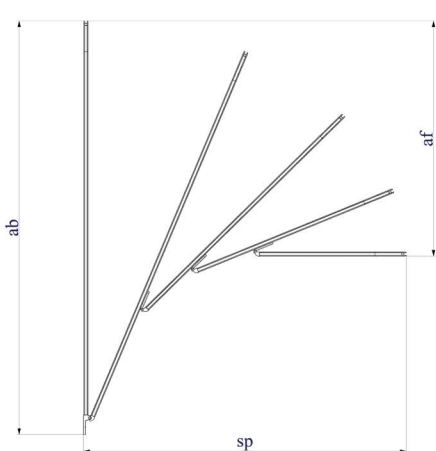
**Staffa parete:**



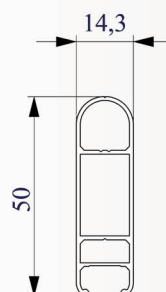
**Staffa soffitto:**



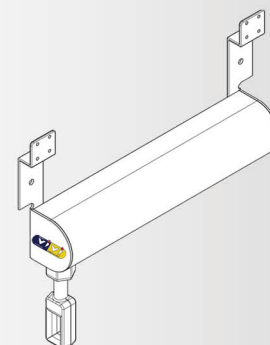
**Dimensioni ed Ingombri:**



**Ingombri profilo:**



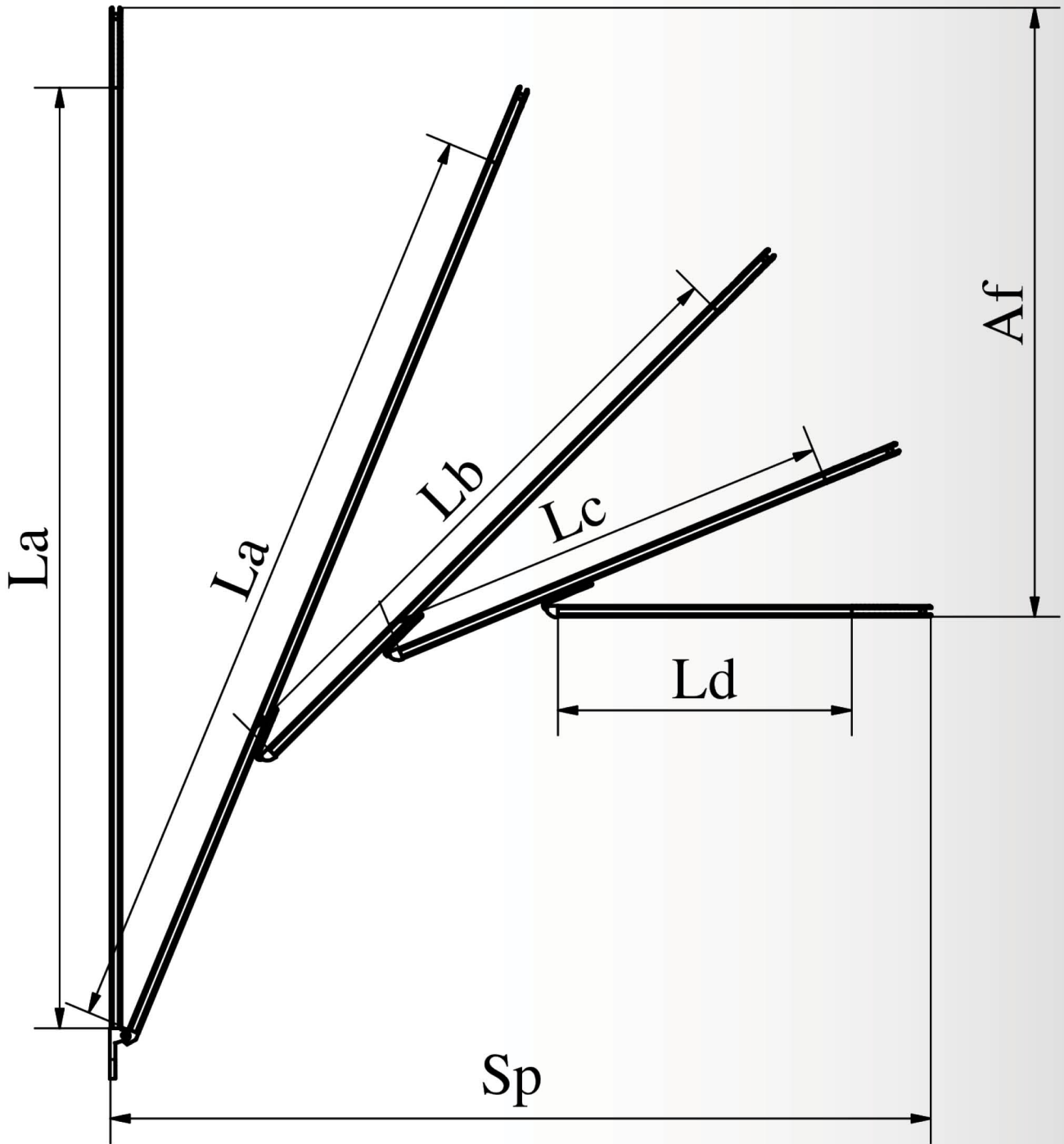
**Kit arganello:**



**Descrizione Prodotto 5 Raggere Scalare:**

Tenda a cappottina con curve e cerniere in alluminio. Profilo in alluminio estruso da mm. 14,3 x 50,0. Apertura e chiusura con fune.

Vista laterale dello Scheletro Quotato:



Sp	Af	La	Lb	Lc	Ld
950	600	1280	958	637	315
1050	700	1430	1080	728	375
1200	800	1630	1245	860	475
1300	900	1730	1325	920	520
1400	1000	1830	1423	1015	610